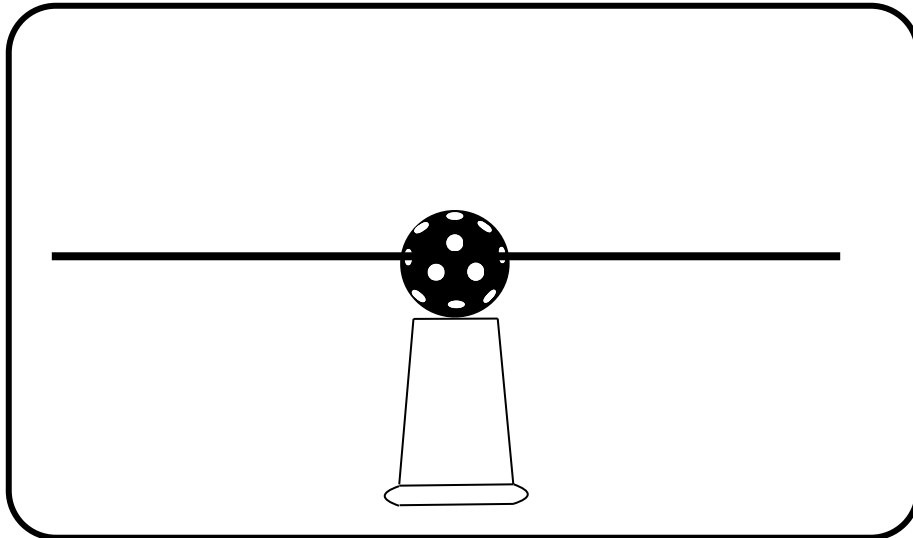


Balancing a seesaw



Where did you put the animals to make the see-saw balance?

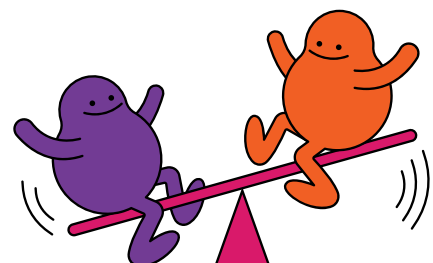
Mark, in centimetres, the location of each animal.

Question: What changes will you need to make to balance in 4 directions?

Guess:

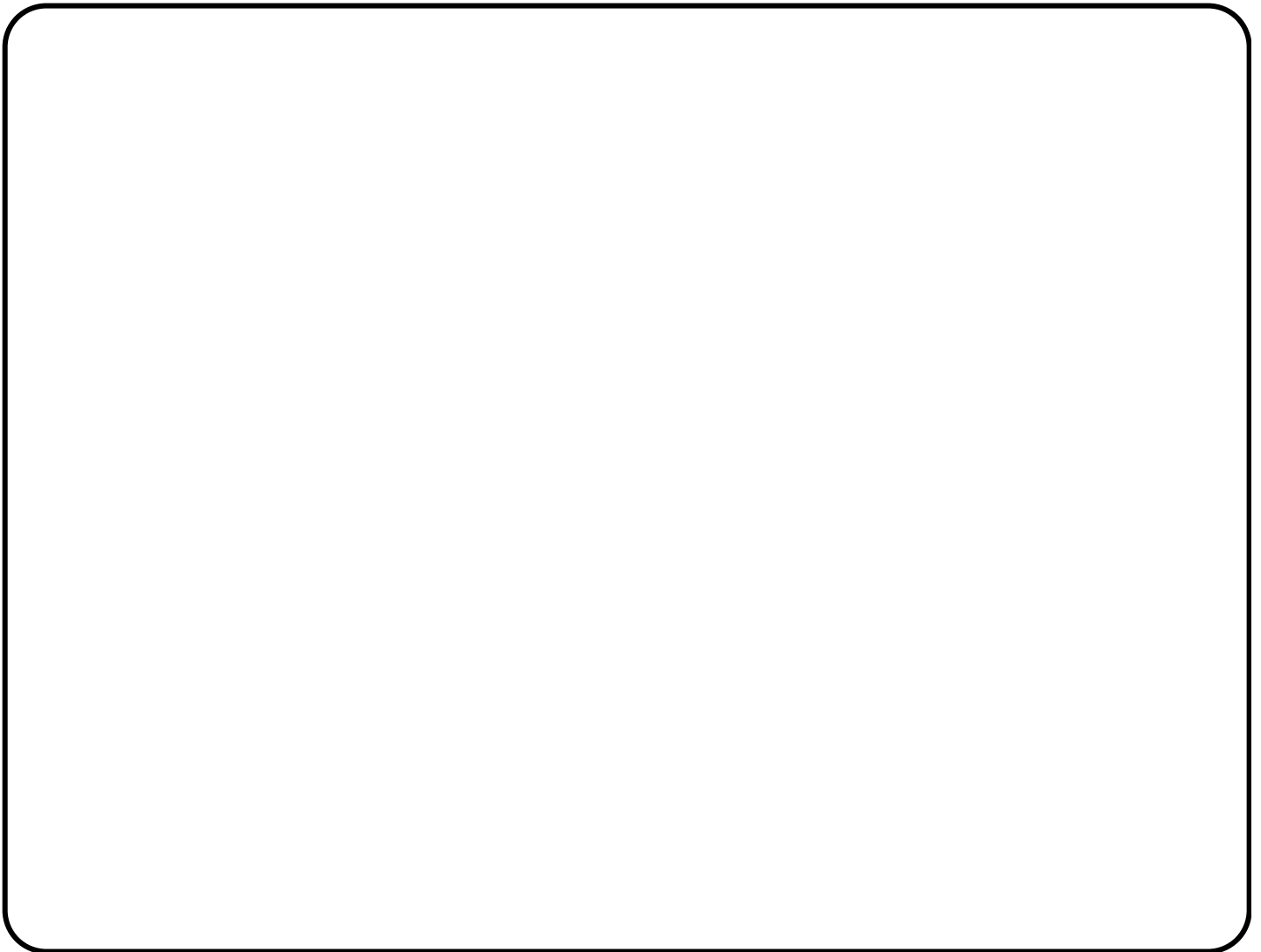
.....

Now TEST it out!



Draw your final see-saw design!

Mark, in centimetres, the location of each weight.



What is something you had to change?

.....

.....

